

Welcome To

QPP
Live!



Quality
Insights

Quality Payment Program Support Center

Breaking News & Announcements



Performance Scores for 2017 Claims Data Available on QPP Website

- If you're an eligible clinician (EC) who submitted 2017 Quality performance data for [MIPS](#) via claims, you'll now be able to view your performance scores through the MIPS [data submission feature](#).
- Claims data submission is only an option if you're [participating in MIPS](#) as an individual (not as part of a group).
- If you've already submitted quality data via claims, you don't have to take any additional action.
- Claims-based quality measures are calculated automatically by CMS based on the G-codes submitted on your 2017 claims. You can simply login at qpp.cms.gov and view your calculated individual measures' scores and category score for Program Year 2017.

Performance Scores for 2017 Claims Data Available on QPP Website (cont.)

- Scoring of claims data is subject to change monthly based on the processing of any additional 2017 claims and adjustments up to 90 days after the end of 2017.
- It is possible that claims or adjustments that were submitted towards the end of 2017 have not yet processed. Please check back after **March 31, 2018**.



Still Time to Submit Claims for 2017

- If you still have 2017 claims you'd like to submit for the Quality performance category, make sure to submit them **now**.
- Claims are processed by Medicare Administrative Contractors (MACs) (including claims adjustments, re-openings, or appeals) must get to the national Medicare claims system data warehouse by **March 1, 2018** to be analyzed.
- The [MACs](#) can provide you with specific instructions on how to bill.
- **Submission Resources**
 - [Quality Payment Program website](#)
 - [MIPS Claims Data Submission Fact Sheet](#)
 - [MIPS Data Submission Video](#)
 - [MIPS Data Submission Fact Sheet](#)

Additional ACI Identifier for 2017 CMS QRDA III Implementation Guide for ECs

- CMS has identified an additional ACI identifier for use with the [2017 CMS Quality Reporting Document Architecture Category III \(QRDA III\) Implementation Guide \(IG\) Version 1.0 for Eligible Clinicians and Eligible Professionals Programs](#).
- The identifier ACI_IACEHRT_1 for ACI Improvement Activities Bonus should be used when submitting for an ACI bonus for the use of certified EHR (CEHRT) for an Improvement Activity (IA).

Additional ACI Identifier for 2017 CMS QRDA III Implementation Guide for ECs (cont.)

- An updated version of the 2018 CMS QRDA III IG will be published to reflect the addition of this identifier.
- You can find additional QRDA related resources, plus current and past implementation guides, on the [eCQI Resource Center](#) and the [CMS eCQM Library](#).



MIPS Resources

- [QPP Data Submission Through the CMS Portal Guide](#) – developed by the New England QPP Support Center
- [MIPS Reporting Deadlines Fast Approaching: 10 Things to Do and Know](#)



Upcoming Webinars

- Implications of the 2018 Final Rule for Solo Practitioners and Small Group Practices Webinars (same presentation – two dates)
 - February 20, 2018 - 7:00 p.m. ET - [Register Here](#)
 - February 22, 2018 – 11:00 a.m. ET - [Register Here](#)
- 2018 QCDR Measures Workgroup
 - February 27, 2018 – 2:00 p.m. to 4:00 p.m. ET – [Register Here](#)
- Physician Compare Webinar (same presentation – two dates)
 - February 21 at 11:00 a.m. ET - [Register Here](#)
 - February 22 at 3:30 p.m. ET - [Register Here](#)

Upcoming Webinars (cont.)

- QPP Data Submission Office Hours: MIPS Quality Data Submission
 - February 28, 2018 at 3:00 p.m. ET - [Register Here](#)
- QPP Data Submission Office Hours: MIPS Attestation for Advancing Care Information and Improvement Activities
 - March 14, 2018 at 3:00 p.m. ET – [Register Here](#)



Meet Our Quality Insights QPP Specialists



Kathy Wild
Project Director



Shanen Wright
Associate Project Director

Delaware



Cathy Browning
≥ 16 clinicians



Roxanne Fletcher
≤ 15 clinicians

Louisiana



Lisa Sherman
≥ 16 clinicians

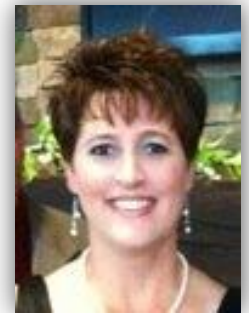


Maureen Kelsey
≥ 16 clinicians

New Jersey



Diana Haniak
≥ 16 clinicians



Amy Weiser
≤ 15 clinicians

Email gpp-surs@tmf.org or call 844.317.7609
(practices with ≤15 MIPS clinicians)

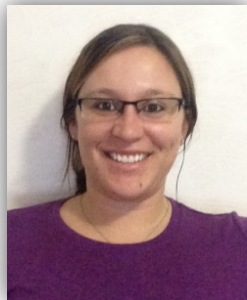
Quality Insights QPP Specialists (cont.)

Pennsylvania

West Virginia



Matthew Armstrong
≤ 15 clinicians



Rebecca Dase
≥ 16 clinicians



Joe Pinto
≥ 16 clinicians



Julie Williams
≤ 15 clinicians



Debbie Hennen
≥ 16 clinicians



Lisa Sagwitz
≥ 16 clinicians



Shirley Sullivan
≤ 15 clinicians

Ask Questions Using Q&A

- On top right side of screen, click on “Q&A”
- Using the “Ask” dropdown menu, choose “**All Panelists**”
- Type in your question and then hit “**Send**”
- Your questions will be addressed in the order in which they are asked
- **Please note:** The **CHAT** feature will be used by the Quality Insights team to post resource links rather than for participants to submit questions.



Ask Questions Verbally

- Once all of the questions that were submitted electronically through the Q&A feature are addressed, we will open the phone lines for attendees to directly ask questions to our team over the phone
- To avoid confusion, the moderator will ask providers from each state if they have any questions - i.e. “Are there any providers from Delaware that have a question?”
- If you are not actively asking a question, **please mute your own phone line** in an effort to minimize background noise



Let's Begin!



Thank You for Joining Us

- **Quality Insights QPP Support Center**
 - For practices with **15 or fewer** eligible providers
 - Email: qpp-surs@qualityinsights.org
 - Phone: **877.497.5065**
 - Website: www.qppsupport.org
- **Quality Insights Quality Innovation Network (QIN)**
 - For practices with **16 or more** eligible providers
 - Email: kwild@qualityinsights.org
 - Phone: **877.987.4687, Ext. 108**
 - Website: www.qualityinsights-qin.org



This material was prepared by Quality Insights, the Quality Payment Program-Small Underserved and Rural Support Center for Delaware, New Jersey, Pennsylvania and West Virginia under contract with the Centers for Medicare & Medicaid Services (CMS), an agency of the U.S. Department of Health and Human Services. The contents presented do not necessarily reflect CMS policy. Publication number QPP- 021518