

Welcome to

QPP
Live!



Quality
Insights

Quality Payment Program Support Center

Quality Insights QPP Team



Kathy Wild
Project Manager



Shanen Wright
Associate Project Director



Amy Weiser
Lead Project Coordinator



Meet Our Quality Insights QPP Experts



Roxanne Fletcher



Andrea Phillips



Shirley Sullivan



Marvin Nichols



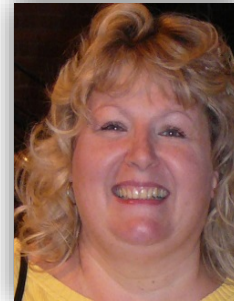
Julie Williams



Joe Pinto



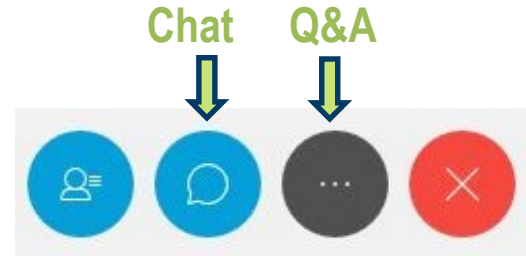
Rabecca Dase



Lisa Sagwitz



Ask Questions Using Q&A



- Q&A Icon

- Open the Q&A feature by dragging your mouse to the bottom of the screen and clicking on the gray icon with the 3 dots in the middle of it, and then select “Q&A” from the drop-down menu
- Type your question in the Q&A feature at the bottom right of your screen and then hit “Send”
- Questions will be addressed in the order in which they are submitted

- Chat Icon

- Open the Chat feature by dragging your mouse to the bottom of the screen and clicking on the blue icon with the “speech bubble” in it
- The Quality Insights team will be posting resource links in the Chat box so please do not submit questions here

Ask Questions Verbally

- Once all questions submitted through the Q&A feature are addressed, we will open the phone lines for attendees to directly ask our team questions over the phone
- If you are not actively asking a question, please mute your own phone line in an effort to minimize background noise



Websites to Explore



- Quality Insights COVID-19 information
 - <http://www.qualityinsights.org/Coronavirus.aspx>
- Quality Payment Program
 - <https://qpp.cms.gov/>

Questions?



Thank You for Joining Us

- **Quality Insights QPP Support Center**
 - For practices with **15 or fewer** eligible providers
 - E-mail: gpp-surs@qualityinsights.org
 - Phone: **1.877.497.5065**
 - Website: www.gppsupport.org



This material was prepared by Quality Insights, the Quality Payment Program-Small Underserved and Rural Support Center for Delaware, New Jersey, Pennsylvania and West Virginia under contract with the Centers for Medicare & Medicaid Services (CMS), an agency of the U.S. Department of Health and Human Services. The contents presented do not necessarily reflect CMS policy. Publication number QPP-040720

